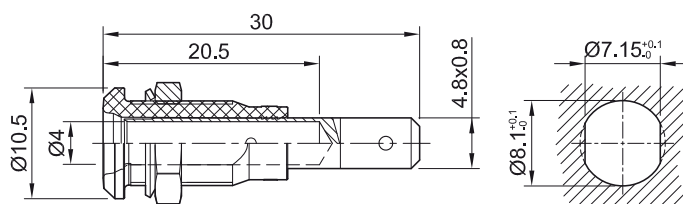


Panel-mount socket LB4H-IF/A

Insulated Ø 4 mm rigid. Machined brass.
The socket can be screw-mounted in pre-drilled panels.

Connection: Flat connecting tab 4.8 mm x 0.8 mm.



Order No.	Type	Rated voltage/current		*Standard colors										
64.3040-*	LB4H-IF/A	AC 30 V/25 A DC 60 V/25 A	Au	<table border="1"> <tr> <td>20</td> <td>21</td> <td>22</td> <td>23</td> <td>24</td> </tr> <tr> <td>25</td> <td>26</td> <td>27</td> <td>28</td> <td>29</td> </tr> </table>	20	21	22	23	24	25	26	27	28	29
20	21	22	23	24										
25	26	27	28	29										

Component parts

64.3050-*	BI-LB4x-IF/A	Socket without nut	
23.5112	MU/M8x0,5	Hexagon nut	Page 117
23.5107	SP4	Washer	Page 118



Flat connecting receptacle FSH4,8x0,8: page 120



Assembly instructions MA168

www.staubli.com/electrical